

# Healthcare Performance Collection IV

## Stance

Pattern	Grade
Bandwidth	6
Cassidy 2.0	2
Criss Cross 2.0	2
Didi	5
Flanders	2
Frequency 2.0	4
Hashtag	4
Nishiki 2.0	2
Petal Dots	6
Twist	6
Weft	2

Interactive Samples

Click on the image to order a memo sample.

Frequency 2.0



FRQ 223 Seashore



FRQ 226 Sapphire

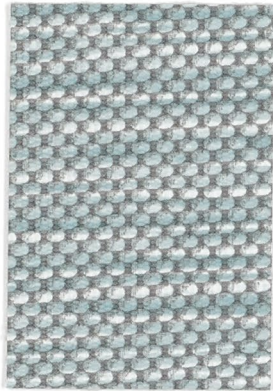


FRQ 225 Gingersnap

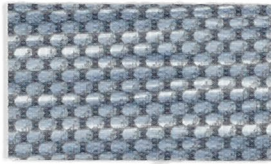


FRQ 220 Ionic

Weft



WEF 17 Breeze



WEF 21 Dusk



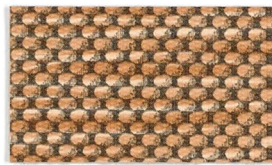
WEF 10 Bisque



WEF 12 Silver



WEF 22 Indigo

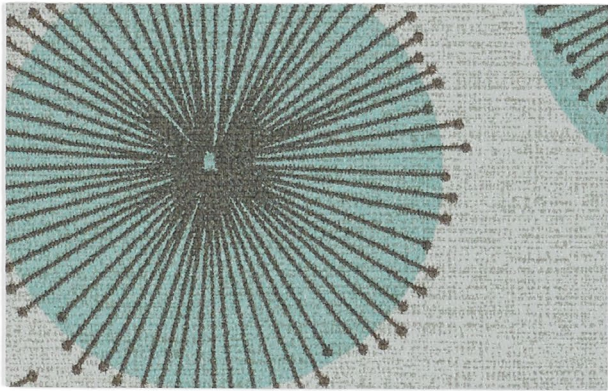


WEF 19 Clay



WEF 13 Salvia

Petal Dots

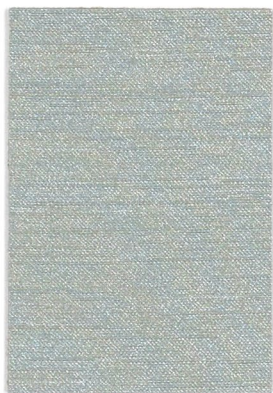


PDO 55 Seaglass



PDO 54 Shoreline

Nishiki 2.0



NIH 256 Celadon



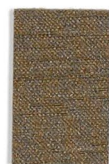
NIH 251 Sake



NIH 261 Oribe



NIH 270 Shibori



NIH 271 Teak



NIH 260 Obi



NIH 253 Gyoza



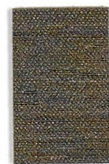
NIH 255 Silver



NIH 266 Peacock



NIH 259 Spice



NIH 254 Sumi



NIH 265 Samurai



NIH 252 Soba

Interactive Samples

Click on the image to order a memo sample.

Twist



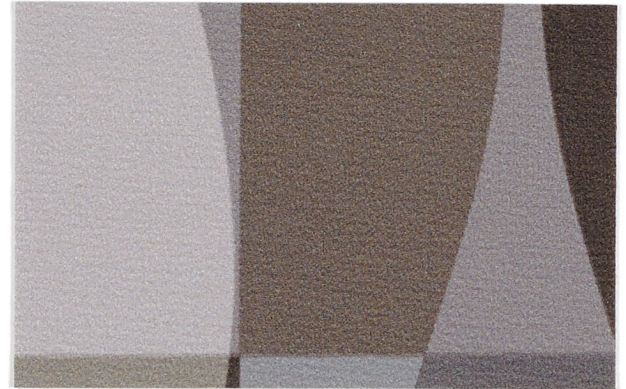
TWT 55 Spring



TWT 52 Sand Dollar

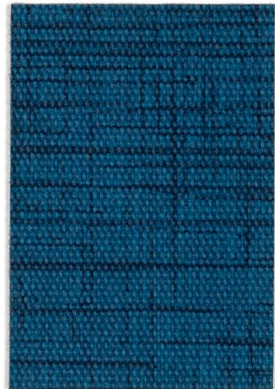


TWT 57 Basil

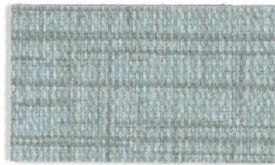


TWT 58 Castlerock

Criss Cross 2.0



CRS 249 Ocean



CRS 250 Rain



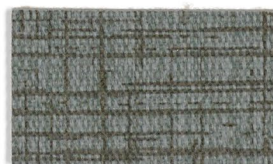
CRS 244 Graystone



CRS 243 Stucco



CRS 260 Navy



CRS 245 Mineral



CRS 251 Meadow

Didi



DID 70 Micron



DID 60 Spa



DID 53 Frontier



DID 57 Neutral



DID 65 Azure



DID 68 Titanium



DID 56 Willow

Interactive Samples

Click on the image to order a memo sample.

Hashtag



HAS 56 Cliff



HAS 50 Marina



HAS 53 Tranquil



HAS 54 Denim

Flanders



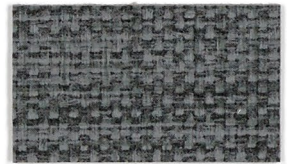
FLA 58 Coconut



FLA 51 Cove



FLA 56 Shore



FLA 63 Slate



FLA 70 Voyage



FLA 61 Seaside



FLA 68 Charcoal

Bandwidth



BDW 57 Terra



BDW 56 Giga

Cassidy 2.0



CAS 226 Ash



CAS 224 Desert



CAS 217 Denim



CAS 251 Parrot



CAS 253 Marlin



CAS 227 Stainless



CAS 232 French Roast



CAS 225 Pelican



CAS 237 Pacific



CAS 281 Aquarius



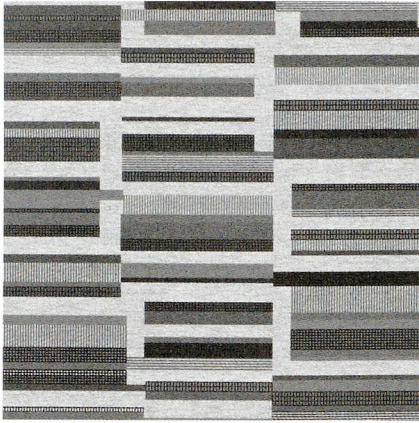
CAS 273 Twig



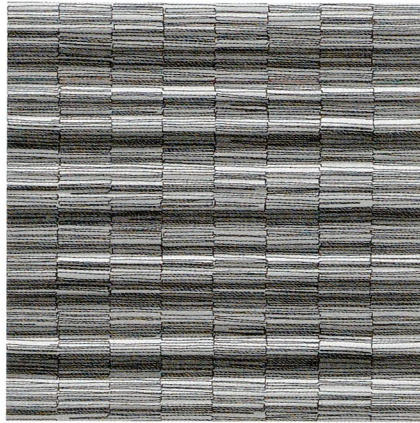
CAS 228 Forest Floor



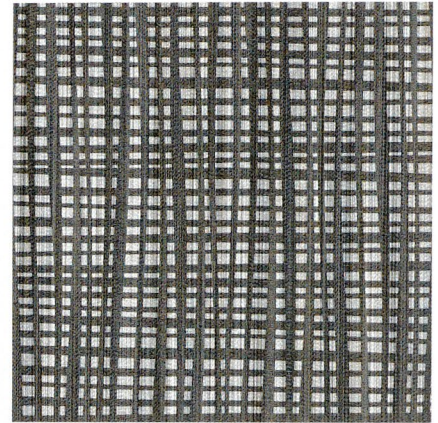
CAS 242 Ebony



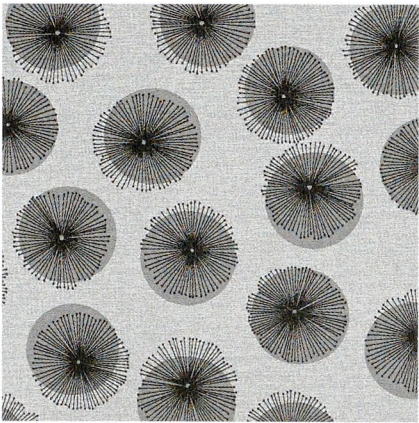
Bandwidth



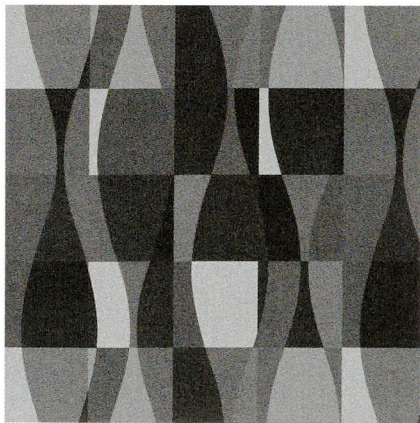
Frequency 2.0



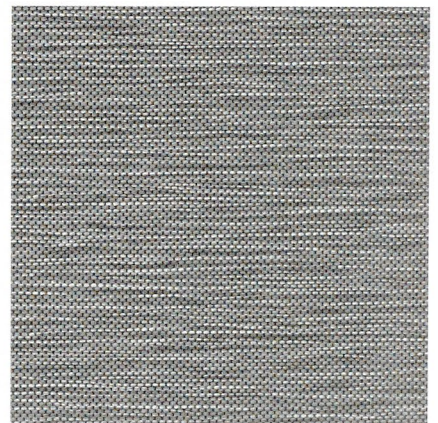
Hashtag



Petal Dots



Twist



Weft

### Performance Summary

- Enhanced soil+stain resistance
- Enhanced abrasion resistance
- Fluid barrier protection
- Bleach-solution cleanable
- Enhanced fade resistance

### Cleaning and Maintenance

Refer to [cfstinson](#) for pattern-specific Care Guides.

Care Guides list specific cleaners and disinfectants approved for use on each individual pattern.

## Specifications

Pattern	Fiber Content and Finish	Abrasion Resistance ◇ (Wyzenbeek)
Bandwidth	Vinyl Surface with Polyester Knit Backing Advanced Soil and Stain Resistant Top Coat	100,000 dr
Cassidy 2.0	Vinyl Surface with Polyester Knit Backing Advanced Soil and Stain Resistant Top Coat	500,000 dr
Criss Cross 2.0	Vinyl Surface with Polyester Knit Backing Advanced Soil and Stain Resistant Top Coat	500,000 dr
Didi	Polyurethane made with Polycarbonate Resins Advanced Soil and Stain Resistant Top Coat + Ink Resistance	250,000 dr
Flanders	Vinyl Surface with Polyester Knit Backing Advanced Soil and Stain Resistant Top Coat	250,000 dr
Frequency 2.0	Vinyl Surface with Polyester Knit Backing Advanced Soil and Stain Resistant Top Coat + Ink Resistance	100,000 dr
Hashtag	Vinyl Surface with Polyester Backing Zeron® Protective Finish	100,000 dr
Nishiki 2.0	Vinyl Surface with Polyester Backing Advanced Soil and Stain Resistant Top Coat	250,000 dr
Petal Dots	Polyurethane (Polycarbonate Resins) with Silicone Surface Advanced Soil and Stain Resistant Top Coat + Ink Resistance	100,000 dr
Twist	Vinyl Surface with Polyester Backing Zeron® Protective Finish	100,000 dr
Weft	Vinyl Surface with Polyester Backing Advanced Soil and Stain Resistant Top Coat	1,300,000 dr

All patterns are 54" wide. Dye lots may vary slightly from samples shown.

All patterns meet the flammability\* requirements of California Technical Bulletin 117-2013, Section 1,UFAC - Class 1, and NFPA 260 - Class 1. Some patterns have been tested for other flammability specifications. Visit [cfstinson.com](http://cfstinson.com) for comprehensive test results.

◇ Wyzenbeek results above 100,000 double rubs have not been shown to be a reliable indicator of increased coated fabric lifespan.



All Patterns listed meet the CFFA - Healthcare - 201B certified minimum performance standards for coated fabrics required for healthcare settings.

These patterns meet or exceed these ACT Performance standards for upholstery:



These patterns have achieved GreenGuard Indoor Air Quality Certification.

### Stinson Grade-In / Memo Samples

The entire Stinson collection is graded into the Stance Healthcare standard program. Look for the Stinson See/Sample/Spec section on the Stance website. Search for patterns by Stance grade, by disinfectant compatibility, and order memo samples.

You may also visit [cfstinson.com](http://cfstinson.com) to order memo samples.

# Stance

45 Goodrich Drive  
Kitchener, ON N2C 0B8

tel 1.877.395.2623  
fax 1.877.395.6270  
web [www.stancehealthcare.com](http://www.stancehealthcare.com)

# Stinson®

C.F. Stinson, LLC .  
2849 Product Drive  
Rochester Hills, MI 48309

w [cfstinson.com](http://cfstinson.com)  
p 800 841 6279  
f 248 299 3884